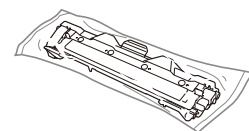
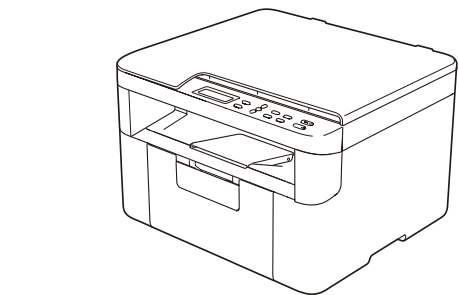
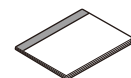


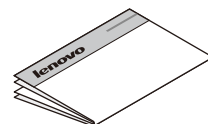
### 1 检查组件 Checking the components



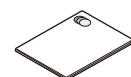
墨粉盒<sup>1</sup>  
Toner cartridge<sup>1</sup>



用户手册  
User's Guide



快速安装指南  
Quick Setup Guide



产品安全手册  
Product Safety Guide

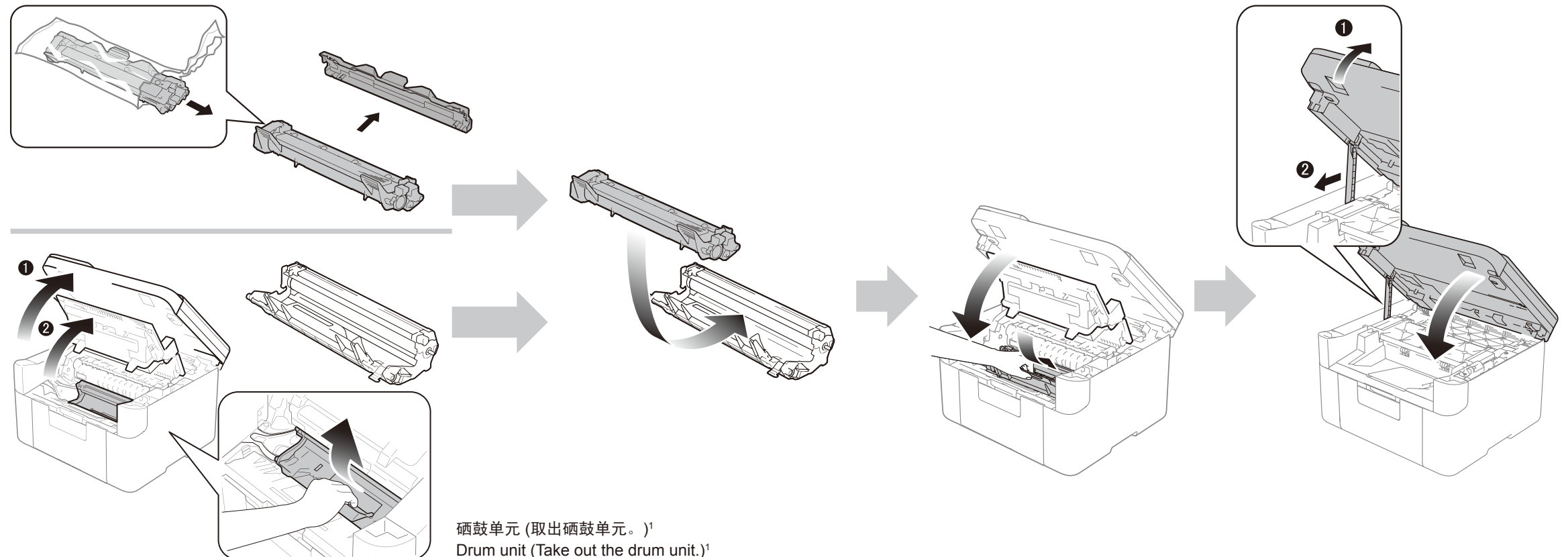


USB接口电缆  
USB Interface Cable

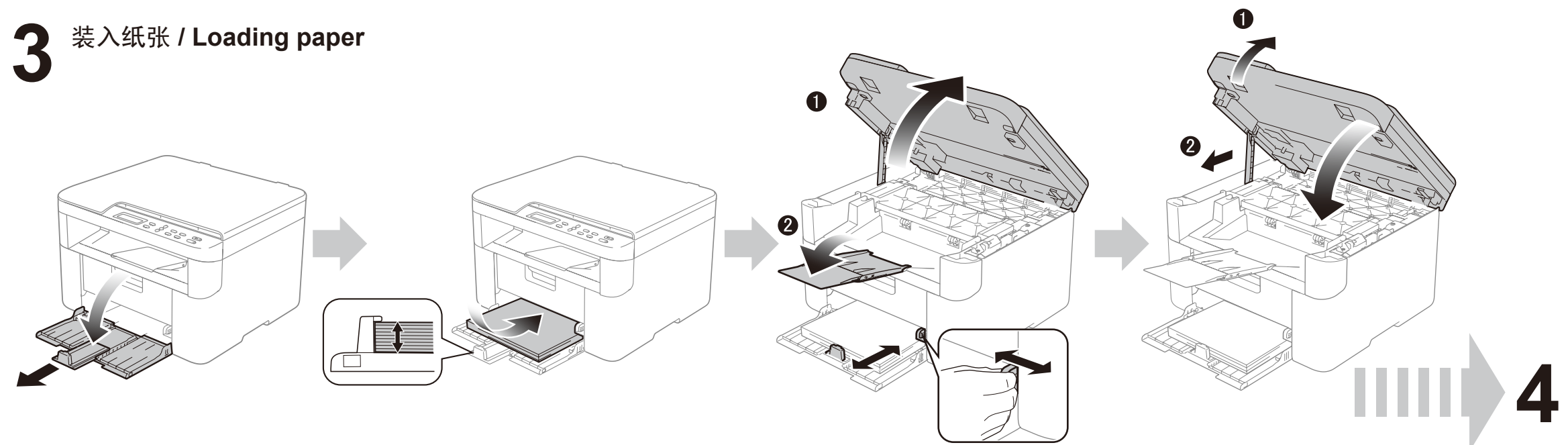


随机安装光盘  
Installer CD-ROM

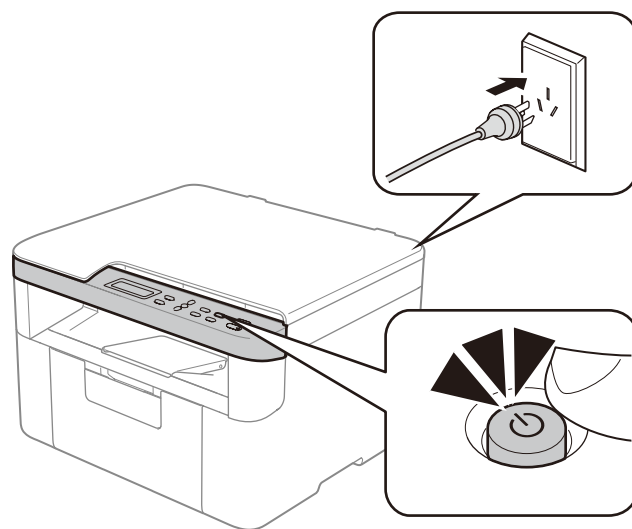
### 2 安装硒鼓和墨粉盒 / Installing the toner and drum



### 3 装入纸张 / Loading paper



## 4 设置国家和语言(设备默认语言为中文) / Setting your country and language (The machine shows Chinese as default)



初始化时, 可能需要设置您所在的国家和/或选择所需语言 (具体取决于产品型号)。  
如有需要, 请遵循屏幕提示完成设置。  
At initialization, you may be required to set your country and / or choose your language (depending on your product).  
If required, follow the on-screen instructions.

若要使用菜单键设置语言 (如有需要) 和任何其他设置或信息  
To set your language using the menu keys (if needed) and any other settings or information

用户手册  
User's Guide

## 5 安装完整的驱动程序和软件包 (多功能套装软件) / Installing full driver and software package (Multi-Function Suite)

### Windows®



请遵循屏幕提示完成安装。  
Please follow the on-screen instructions to complete the setup.

(仅适用于 Windows® 8)  
使用 Adobe® Reader® 打开随机光盘上的 PDF 说明书。  
如果安装了 Adobe® Reader® 却无法打开 PDF 文件, 请在控制面板中将 “.pdf” 文件关联更改为 “Adobe® Reader®”。

(For Windows® 8 only)  
Use Adobe® Reader® to open the PDF manuals on the CD-ROM.  
If Adobe® Reader® is installed but you cannot open the files, change the “.pdf” file association to “Adobe® Reader®” from the control panel.

### Macintosh

您可以登录 Lenovo 网站免费下载最新设备驱动程序, 以便您使用Lenovo设备。请访问以下网站: <http://www.lenovo.com/>。  
You can download the latest device driver for free from the Lenovo Support Website, enabling you to use your Lenovo machine as a printer. Visit us at <http://www.lenovo.com/>.